

MURATA type BNX

EMIFIL®

A range of double L configuration, block type power filters which consist of a four terminal capacitor, a feed-through capacitor and bead inductors providing excellent attenuation over a wide frequency range. Suitable for noise suppression on output lines of power supplies.



- ◆ Double L configuration
- ◆ Ultra high performance EMI filter
- ◆ Wide noise suppression band
- ◆ Excellent attenuation

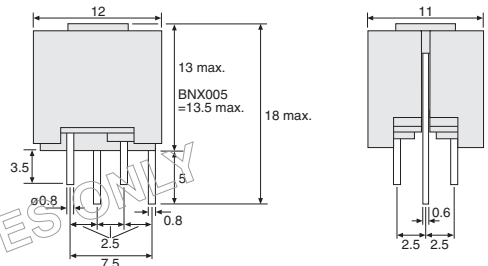
Specification

Voltage drop 30mV max.
 Insulation resistance 100MΩ min.
 Operating temperature range -30°C to +85°C

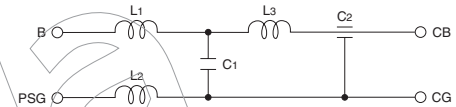
Ratings (dc)		Dielectric Strength (V)	Insertion Loss (40dB min.) over
Current (A)	Voltage (V)		
10	50	125	1MHz - 1GHz
10	150	375	5MHz - 1GHz
15	50	125	1MHz - 1GHz

Manf. Part No. & anglia Order Code
BNX002-01
BNX003-01
BNX005-01

Dimensions (mm)



Schematic



MURATA type BNP

EMIFIL®

A range of pi configuration, block type power filters consisting of a feed-through capacitor and bead inductors providing an excellent attenuation over a wide frequency range. Suitable for noise suppression on signal lines and output lines of power supplies.



- ◆ Pi configuration
- ◆ Ultra high performance EMI filter
- ◆ Wide signal pass band
- ◆ Excellent attenuation

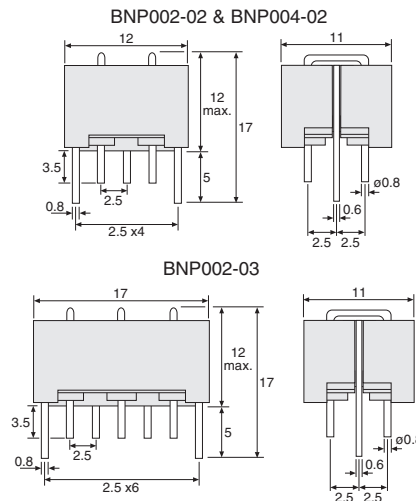
Specification

DC resistance 0.05Ω max.
 Current rating 10A
 Voltage rating 50Vdc
 Insulation resistance 1000MΩ min.
 Operating temperature range -40°C to +100°C

No. of Circuits	Dielectric Strength (V)	Insertion Loss (40dB min.) over
2	300	20 - 500MHz
3	300	20 - 500MHz
2	125	300MHz - 1GHz

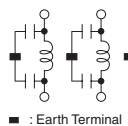
Manf. Part No. & anglia Order Code
BNP002-02
BNP002-03
BNP004-02

Dimensions (mm)



Schematics

BNP002-02 & BNP004-02



BNP002-03

