

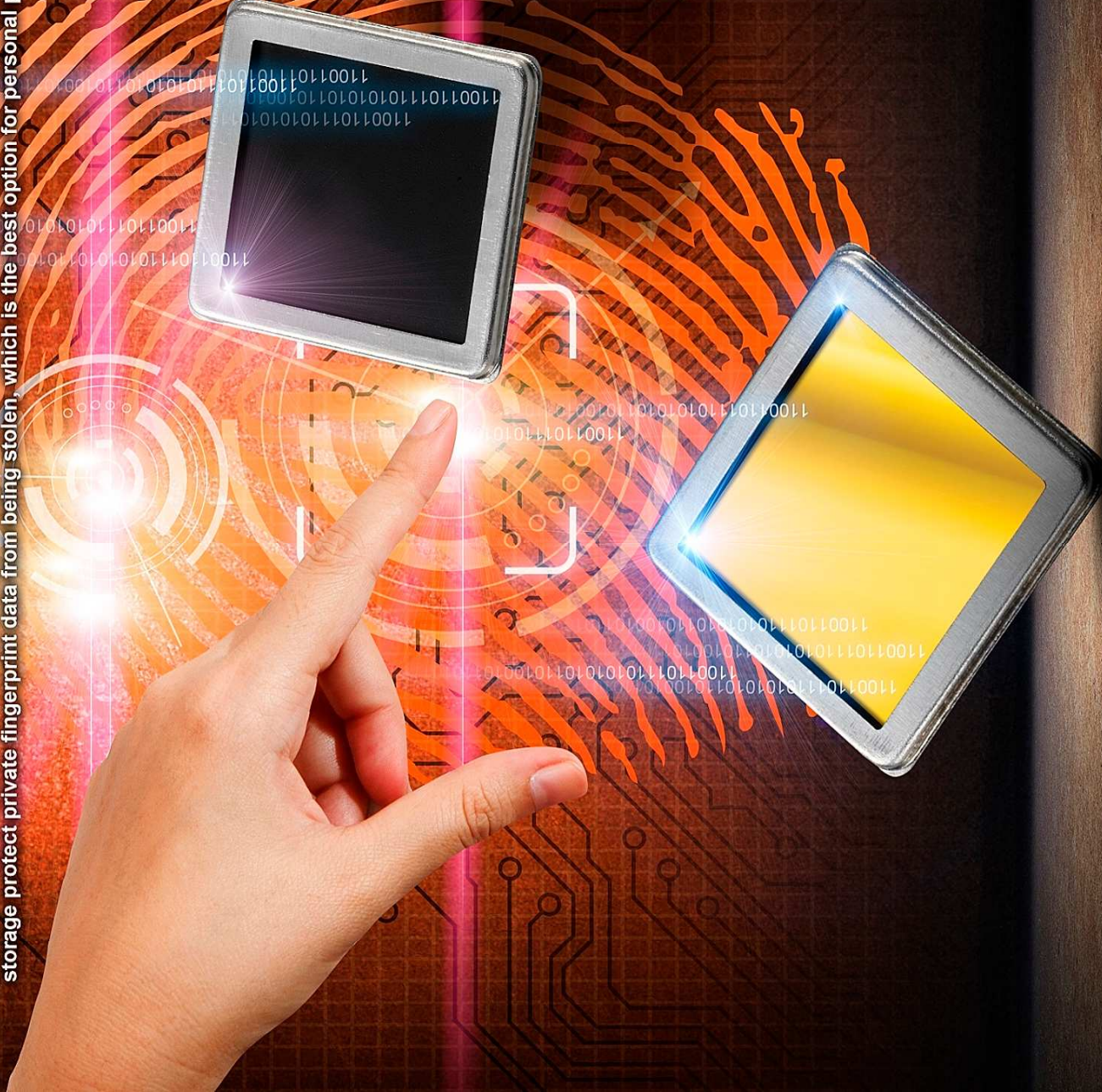
JP2000

Capacitance Sensor

JP2000 is an ultra-thin semiconductor fingerprint sensor whose thickness is only 0.6mm. Near diamond coating provides up to 8H hardness and more than 10 million finger-placements. Needless to say, anti-ESD protection above 30kV is equipped in JP2000.

The JP2000 has an ultra-low power consumption less than 2mA in operation mode and 3uA in sleep mode, suitable for low power consumption application.

64-bit encrypted sensor communicating with microcontroller unit and optional AES128/256 encryption for data storage protect private fingerprint data from being stolen, which is the best option for personal privacy.



Features:

- Near diamond coating up to 8H
- Image with 256 true gray scale values
- High speed SPI interface
- 2.7-3.3 volt operation/ 1.8 volt (using level shifter)
- 30KV ESD protection
- CE & RoHS compliant
- Ultra-low power consumption



JP Sensor